

# Want to Make an Impact?

## Volunteer With the ESRD National Coordinating Center (NCC) as a Subject Matter Expert (SME)



### What is a SME?

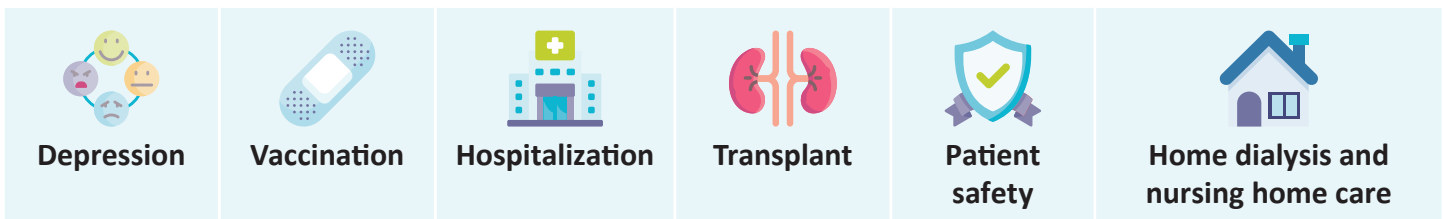
- An SME is someone like you, an individual with kidney disease who may be receiving dialysis or have a transplant, or a care partner.
- A person willing to share his/her experiences to improve the quality of care for patients with kidney disease.

### What is the ESRD NCC NPFE-LAN?

The National Patient and Family Engagement (NPFE) Learning and Action Network (LAN):

- Brings people together to solve a shared problem on a large scale.
- Everyone in the LAN has an equal voice and can share stories, new ideas, and ways to improve how things work so patients get better care.

Within the LAN, members participate in smaller groups called Affinity Groups. Our LAN has six separate Affinity Groups focused on:



*Our LAN also has a Health Equity Committee that every SME is invited to join.*



*Share your ideas on how to improve kidney care.*

*Help make patient care better at a national level.*

*Meet other people who want to help people with kidney disease.*

*Be a voice for other kidney patients and their caregivers.*

### What's next?

- Let your ESRD Network or social worker know you are interested. Once nominated, a member of the ESRD NCC team will contact you with more information.
- You'll be invited to our May kick-off call for more information about time commitment and engagement opportunities.

